

Company Profile

Product and Services

DTECH Corporation S.A.
Thessaloniki, Greece

DTECH

Corporation S.A.

Company Profile

• Timeline

- Originates from Aristotle University
- DTECH G.P. Established in 2007
- DTECH Corp. S.A. Established in 2012

• Activities

- Software Development
- Engineering Services

Customer Examples

- Honda motorcycles
- Honda automobiles
- Toyota
- Samsung Heavy Industries



Cooperation Culture

- OPCE II: Operational Programme
“Competitiveness and Entrepreneurship”



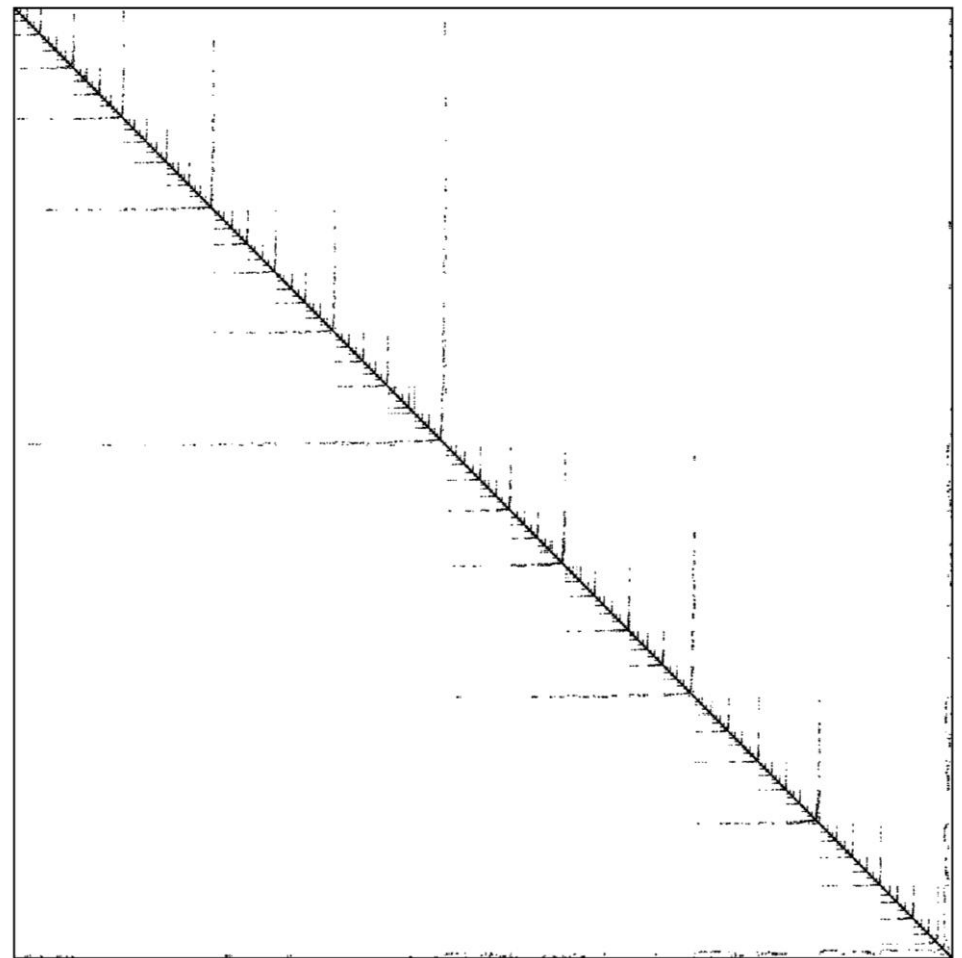
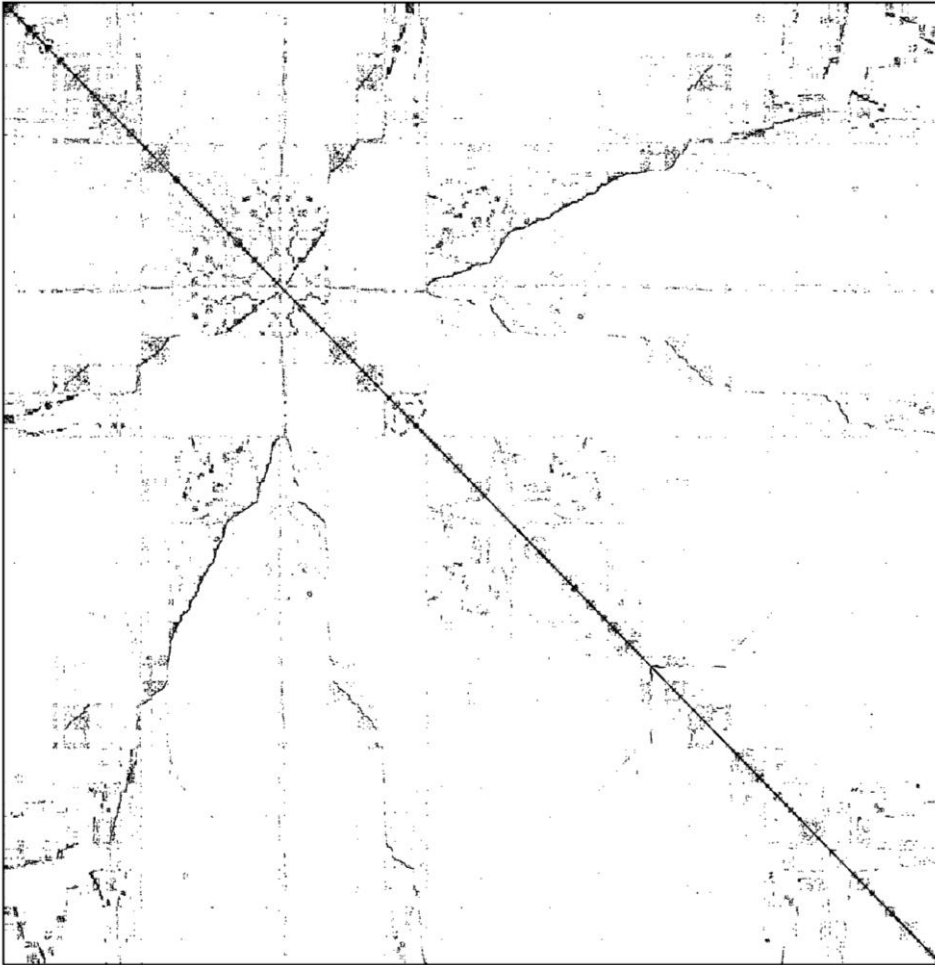
- Aristotle University of Thessaloniki
- University of Western Macedonia
- Hiroshima University



Product Overview



Mathematical Formulation



Technology Exchange

- Engineering Field
- Numerical Analysis
- Information Technology

Engineering Field

- Structural Mechanics
- Heat Transfer
- Acoustics, NVH
- Electromagnetics
- Fluid Dynamics

Numerical Analysis

- Large Sparse Linear System
 - Direct Solvers
 - Iterative Solvers
- Nonlinear System Solvers
- Optimization

Information Technology

- Shared Memory Parallelism
 - Threads
 - OpenMP
- Distributed Memory Parallelism
 - MPI Protocol
- Stream Processing (GPGPU)
 - CUDA
 - OpenACC

Thank you